



User Manual

Glite T8

Pacific Image Electronics



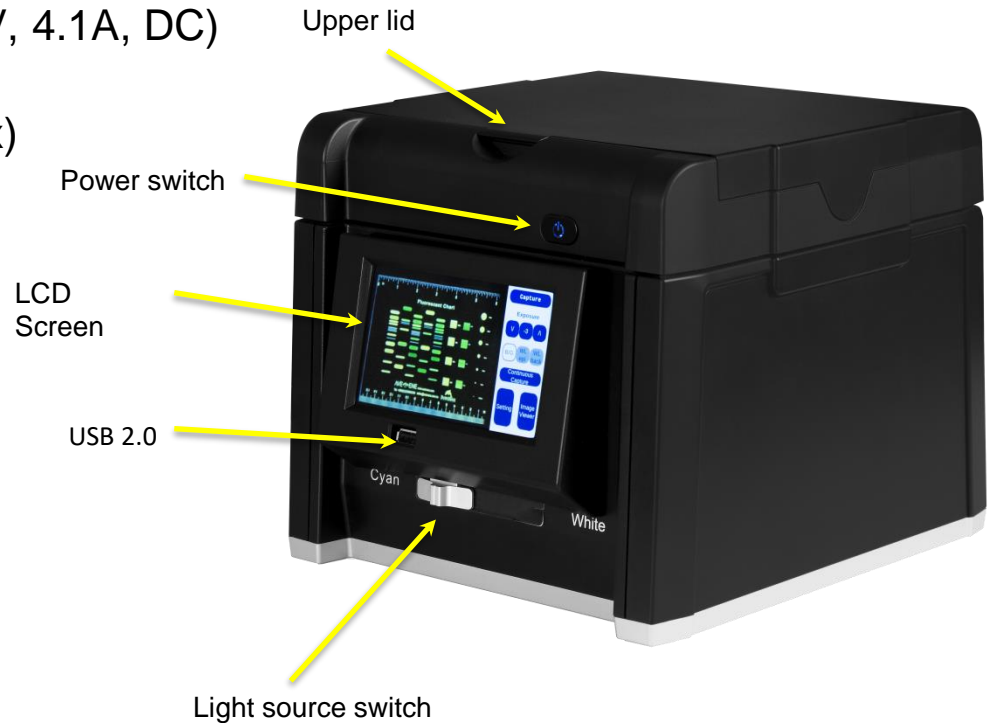
Product Content

- » Glite T8
- » User manual
- » Gel shovel
- » A/C Power Transformers(12V, 4.1A, DC)
- » Amber Filter (in box)
- » Black shading plate (in box)
- » Gel cutter

Glite T8

Front

- » Upper lid
- » USB 2.0
- » LCD Screen
- » Power switch
- » Light source switch



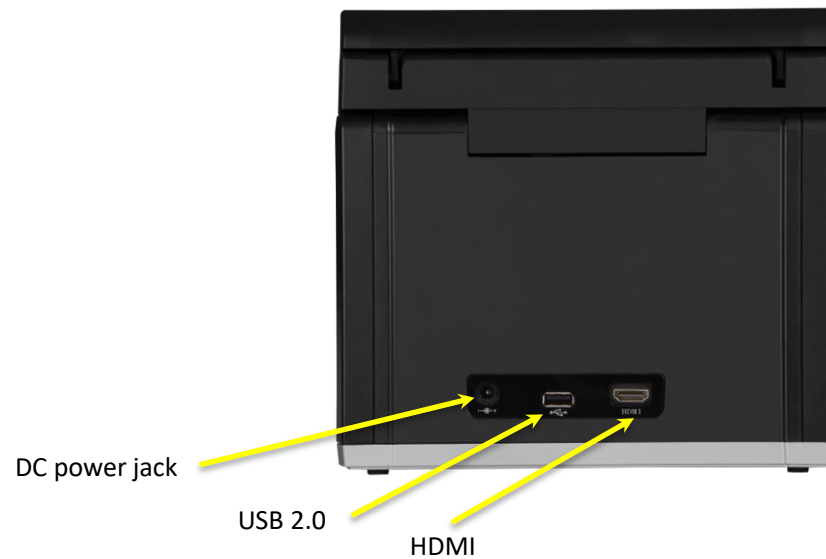
Interior

- » Gel shooting area
- » Upper lid sensor



Back

- » DC power jack
- » USB 2.0
- » HDMI

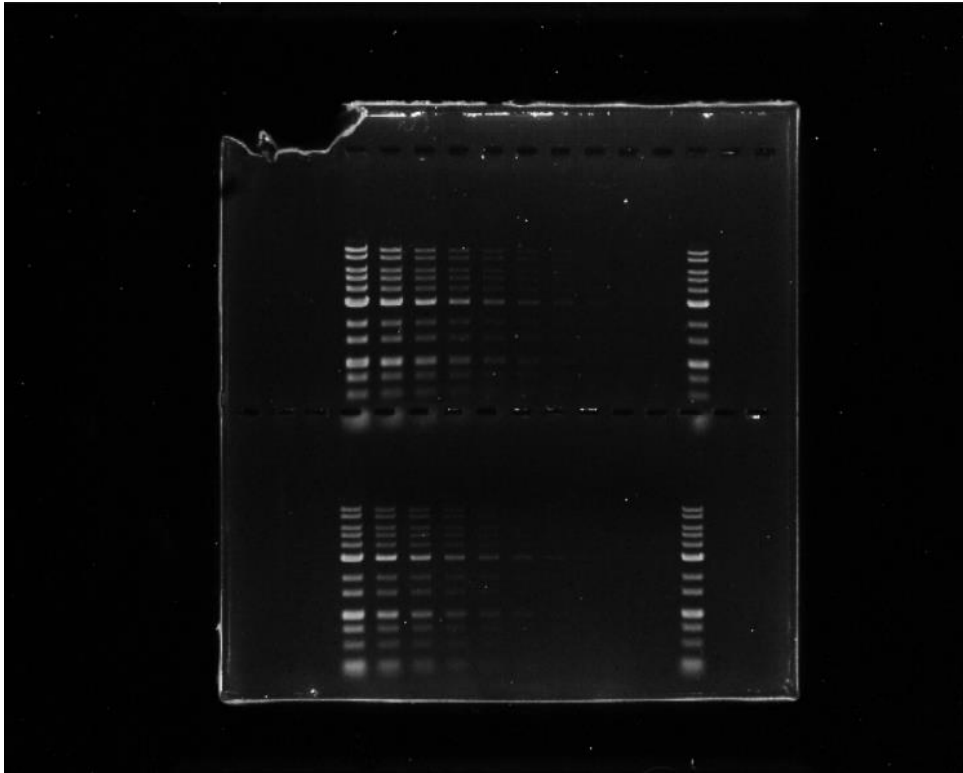


Install & use

1. Remove all fixing tape.
1. Place the Glite T8 on a flat table.
1. Connect the power supply.
1. Press the power switch.
1. Insert the USB flash drive into the USB2.0 port on the front.
1. Put the gel into gel shooting area.
1. Adjust the image exposure value to a satisfactory condition and press the button to take a photo.

User Interface Instruction

Main screen



Capture

① Capture

Exposure

V

0

^

② Exposure

B/G

WL
epi

WL
back

③ B/G & WL epi, WL back

Continuous
Capture

④ Continuous Capture

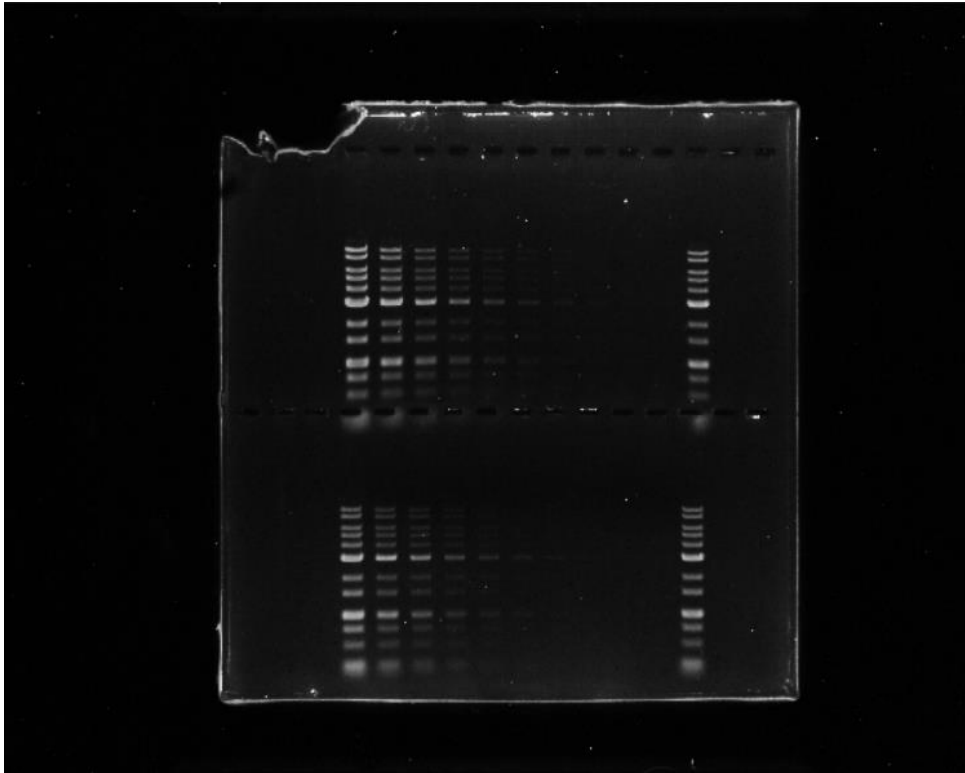
Setting

Image
Viewer

⑤ Setting

⑥ Image Viewer

① Capture



①

Capture

Exposure

V 0 ^

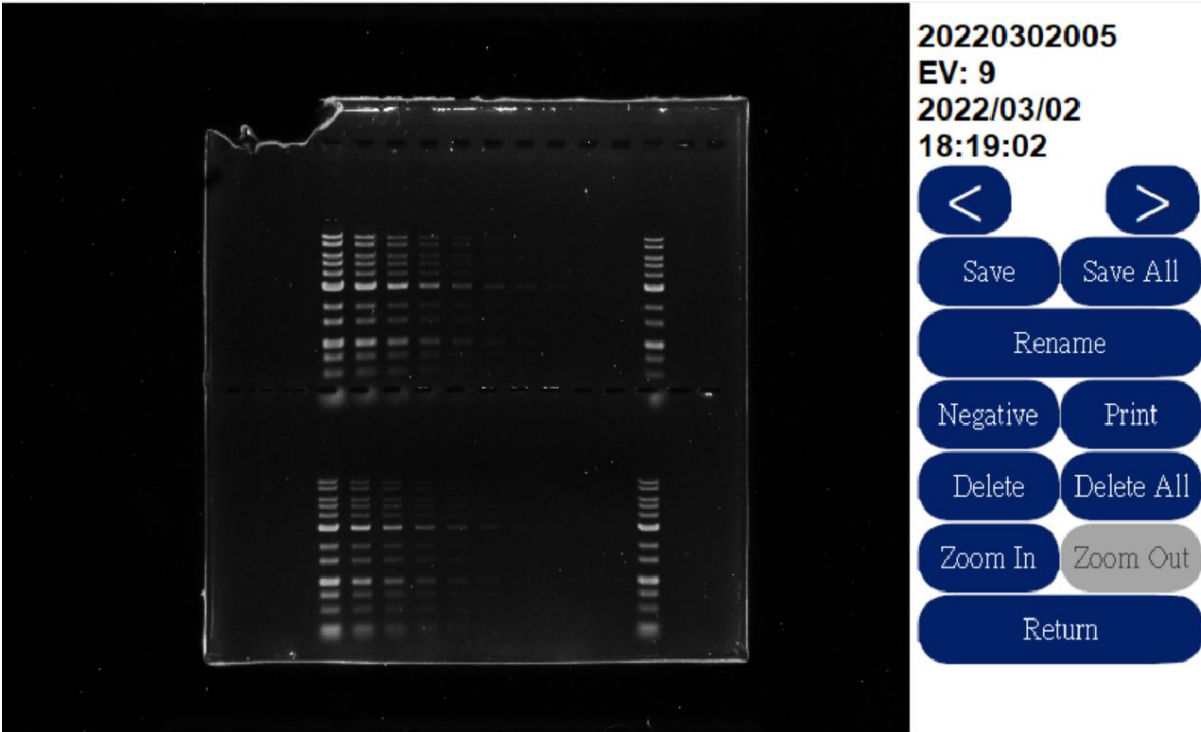
B/G WL WL
epi back

Continuous
Capture

Setting Image
Viewer

① Capture is the button that allows you to take photos and capture the gel imaging screen.

① Capture



Click Capture, and after loading ends, you will be redirected to the setting screen after shooting.

Save – Save this result

Save all – Save all results

Rename – Can be renamed

Negative – Can be adjusted to invert effect

Print—Print result*

Delete – Delete this result

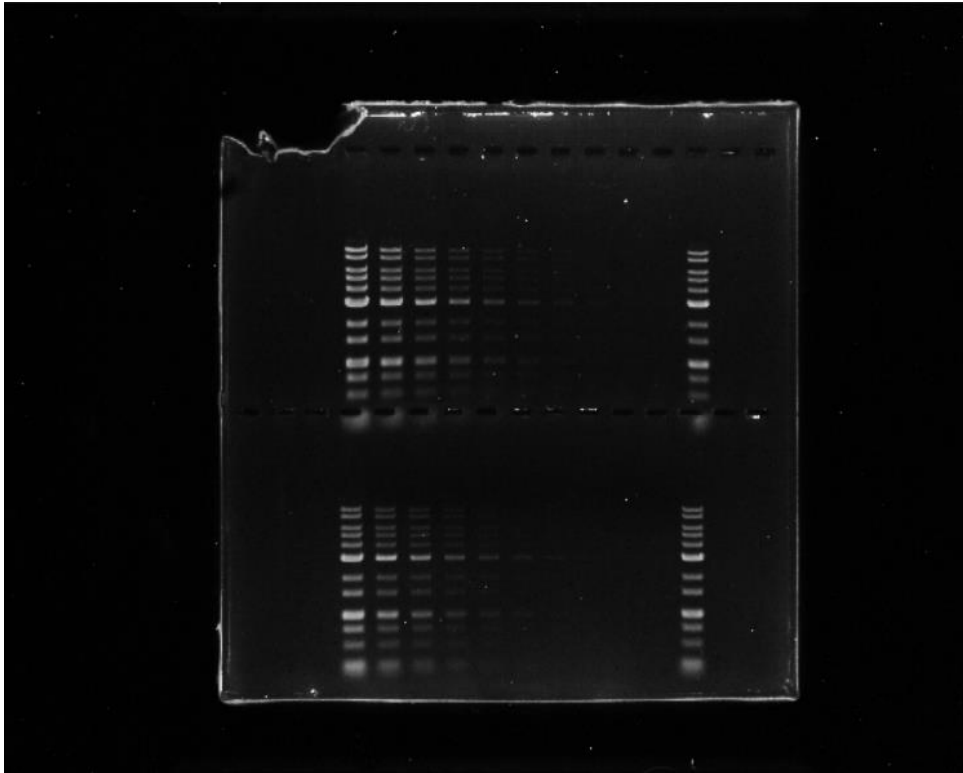
Delete all – Delete all results

Zoom In/Out—Image zoom in/out

Return – Back to the main screen

*Glite T8 support Sony thermal printer: UP-D898MD & UP-897MD

② Exposure



Capture

② Exposure

V

0

^

B/G

WL
epi

WL
back

Continuous
Capture

Setting

Image
Viewer

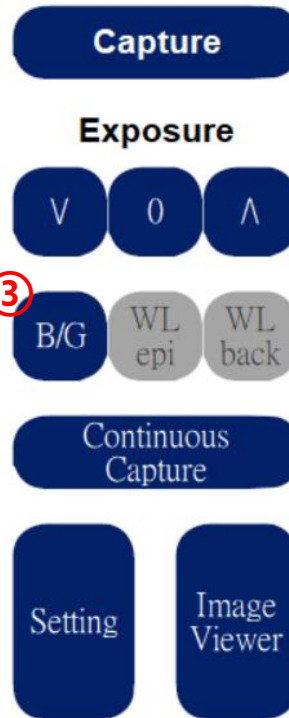
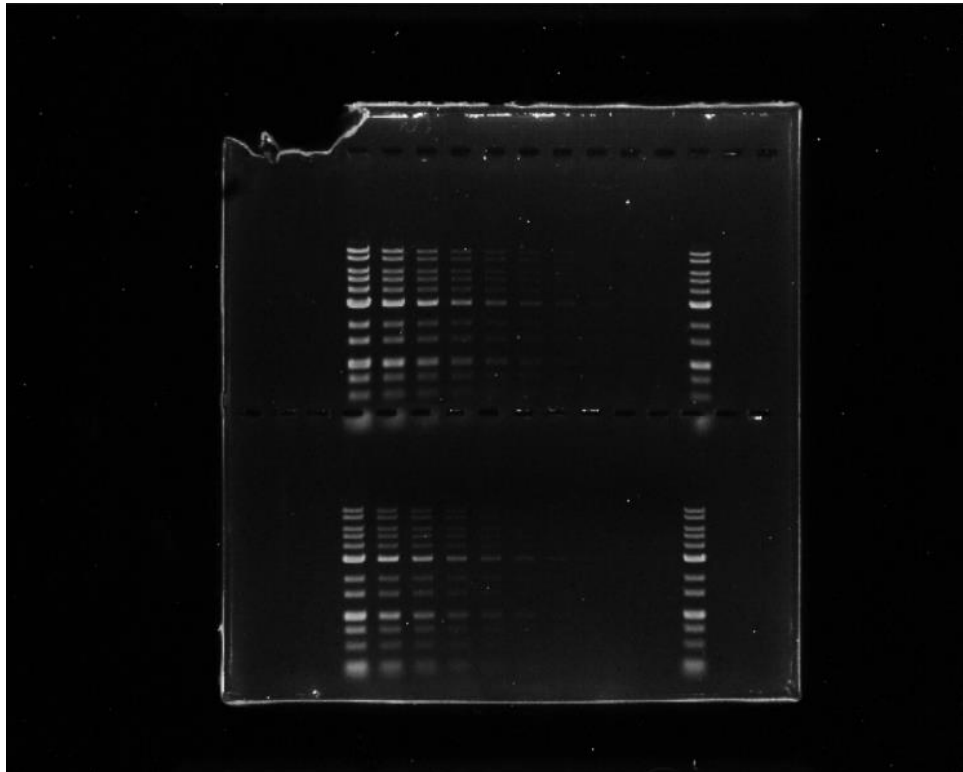
② Exposure allows users to adjust the exposure level.

Range: -10 to +10

③ B/G & WL epi, WL back

③ B/G is to adjusted to Cyan's light source using the switch on the front of the device.

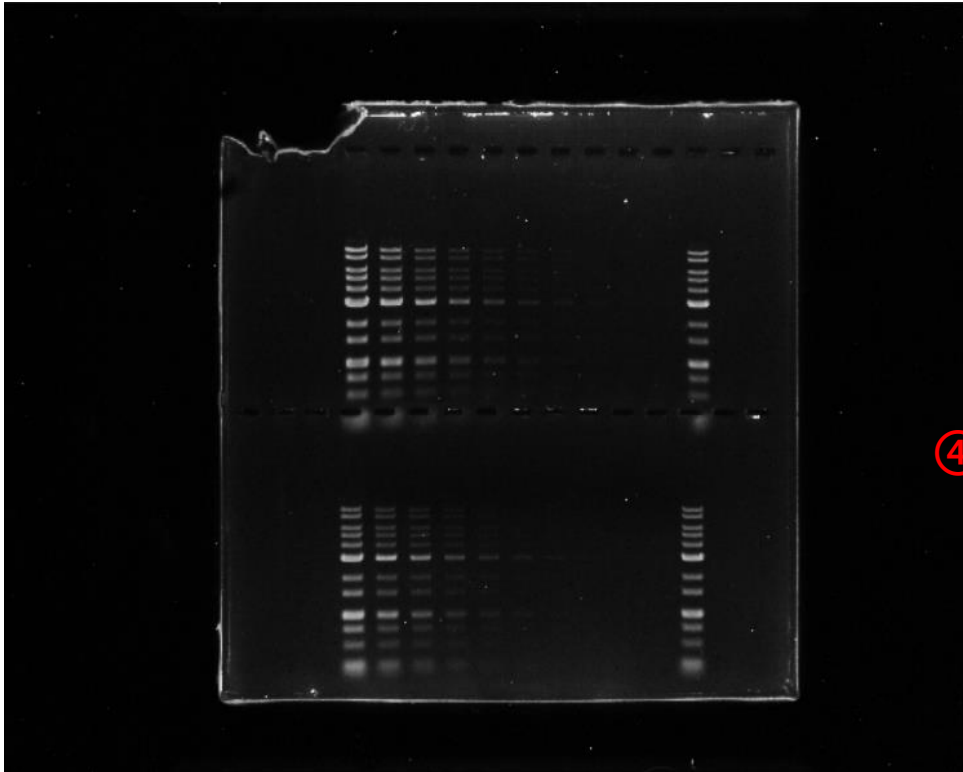
WL epi, WL back is to adjusted to White by the switch on the front of the device, and it has two modes: front light and backlight



← ※Notice: Click once to initiate the light source, and the background of the button would be white.



④ Continuous Capture



Capture

Exposure

V

0

^

B/G

WL
epi

WL
back

④ Continuous
Capture

Setting

Image
Viewer

④ Continuous Capture is the exposure value that can continuously shoot screens from -2 to +2.

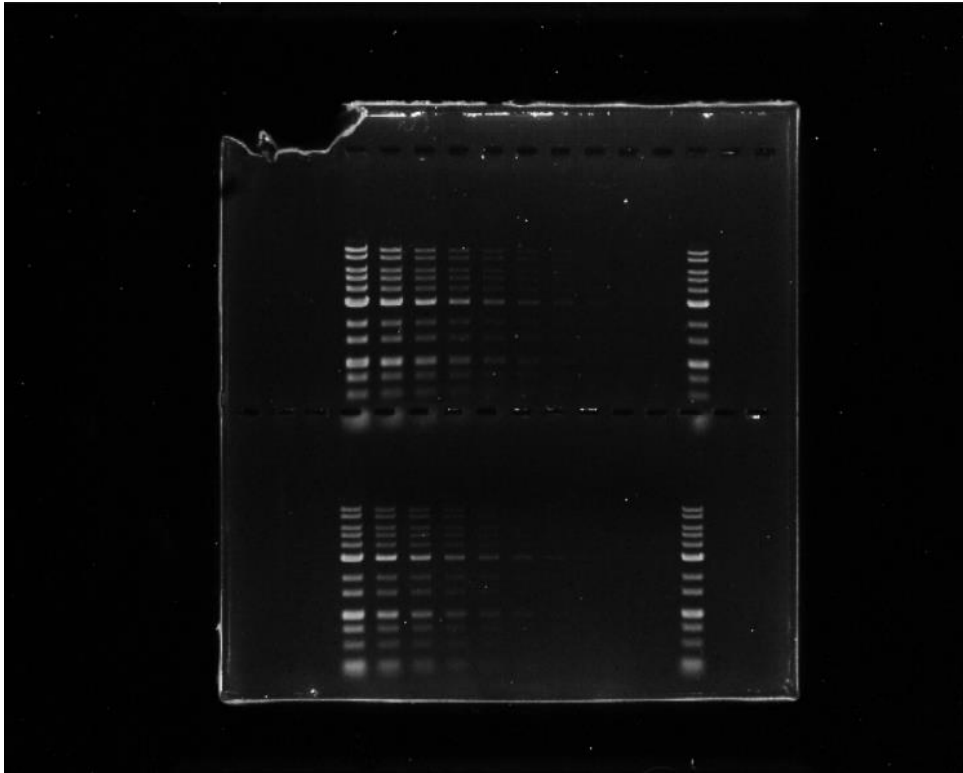
After clicking, the following screen will appear

Capture EV:-2~EV:+2
Are you sure?

Yes

No

⑤ Setting



Capture

Exposure

V

0

^

B/G

WL
epi

WL
back

Continuous
Capture

⑤

Setting

Image
Viewer

⑤ Setting contains a variety of different settings (see next page)

⑤ Setting

Glite T8 UI-SW:v1.0.0.25a IO-FW:v0.0

Update S/W

Sleep

Date
Time

Mouse

Update S/W – Plug in the USB to update the software

Save Format

TIF

Color Type :

Color

Language :

English

⑤ Setting

Glite T8 UI-SW:v1.0.0.25a IO-FW:v0.0

Update S/W

Sleep

Date
Time

Mouse

Save Format

TIF

Color Type :

Color

Language :

English

Sleep – Sleep time can be set (as shown below)

Sleep after

1 Min.

5 Min.

10 Min.

30 Min.

Never

Back

⑤ Setting

Glite T8 UI-SW:v1.0.0.25a IO-FW:v0.0

Update S/W Sleep **Date Time** Mouse

Save Format **TIF**

Color Type : **Color**

Language : **English**

Date/Time – Set the date and time
(as shown below)

Date :

Year :

Month :

Day :

Time :

Hour :

Minute :

Second :

OK

Back

⑤ Setting

Glite T8 UI-SW:v1.0.0.25a IO-FW:v0.0

Update S/W

Sleep

Date
Time

Mouse

Mouse – You can connect a mouse to the USB port for operation

Save Format

TIF

Color Type :

Color

Language :

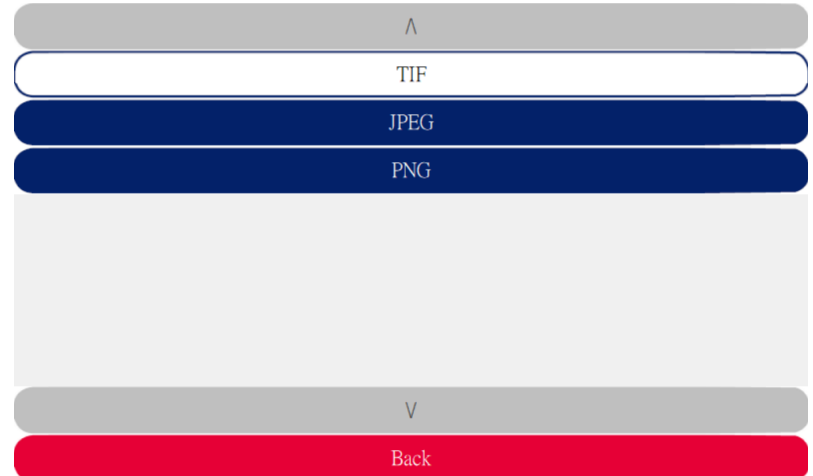
English

⑤ Setting

Glite T8 UI-SW:v1.0.0.25a IO-FW:v0.0



Save Format – Optional storage image format (as shown below)



⑤ Setting

Glite T8 UI-SW:v1.0.0.25a IO-FW:v0.0



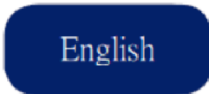
Save Format



Color Type :



Language :



Color Type – Choose Color or Gray
(as shown below)



⑤ Setting

Glite T8 UI-SW:v1.0.0.25a IO-FW:v0.0

Update S/W

Sleep

Date
Time

Mouse

Language – English or Chinese

Save Format

TIF

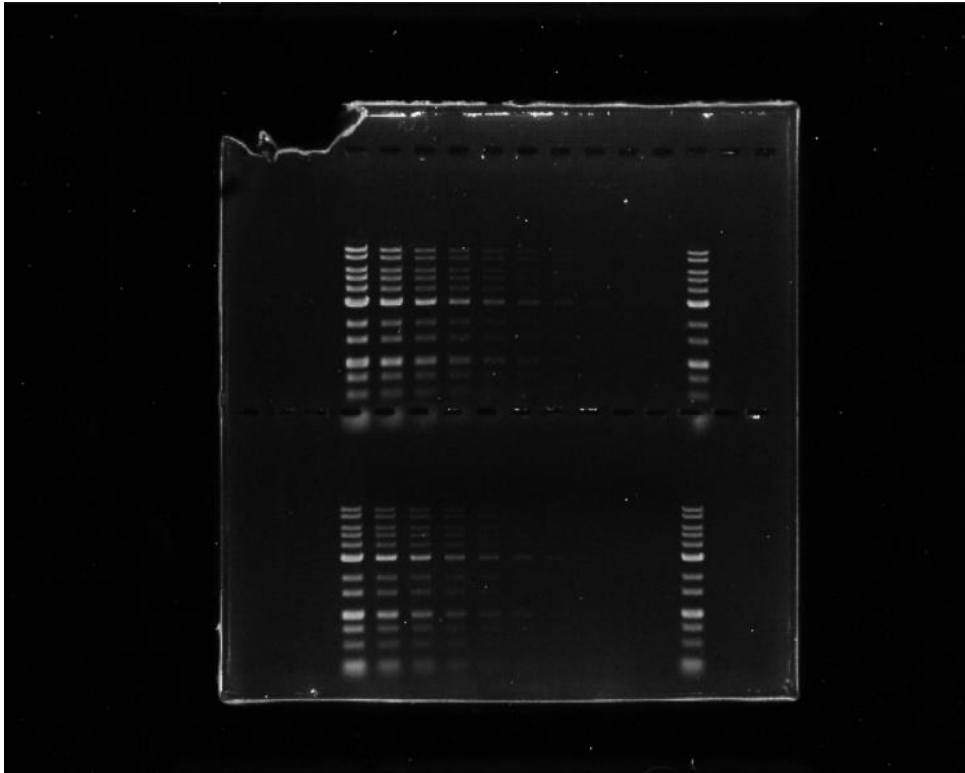
Color Type :

Color

Language :

English

⑥ Image Viewer



Capture

Exposure

V 0 ^

B/G WL WL
epi back

Continuous
Capture

Setting

⑥
Image
Viewer

⑥ Image Viewer allows you to browse the previously analyzed images, please refer to the explanation on p8 for the screen.

Cyan Dye Gel

1. Lift up the upper lid.
1. Slide the black shading plate (with the flannel side outward) into the rail to cover the white backlight plate of the upper cover.
1. Close the upper lid (if you need to open the cover to cut gel, observe or adjust the position, please use the amber filter, as shown in the right picture, see p23).
1. Switch the light source to Cyan.
1. If necessary, adjust the parameters through the Camera Tester in the Setting to obtain satisfactory image quality (please refer to p16).
1. Press the Capture button and the Loading icon will appear on the LCD panel.

The gel shooting process is complete.



To shoot fluorescent film images, please slide the black shading plate (with the flannel side outwards) into the rail to cover the white backlight plate of the upper cover to avoid reflections.

Use a white light source to shoot WESTERN BLOT/ and color gel film:

1. Shooting HRP/DAP WESTERN BLOT with WL epi
 1. Slide the black shading plate (with the flannel side outward) into the rail to cover the white backlight plate of the upper cover.
 2. Close the upper lid.
 3. Switch the light source to the White position.
 4. Set "WL epi" on the main screen.
 5. If necessary, adjust the parameters through the Camera Tester in the Setting to obtain satisfactory image quality (please refer to p16).
 6. Press the Capture key.

2. Use WL back to shoot SDS-PAGE gel with coomassie blue dye
 1. Pull out the black shading plate, do not cover the white backlight plate of the upper lid.
 2. Close the upper lid.
 3. Switch the light source to the White position.
 4. Set "WL back" on the main screen.
 5. If necessary, adjust the parameters through the Camera Tester in the Setting to obtain satisfactory image quality (please refer to p16).
 6. Press the Capture key.

Use amber filter

Glite T8 has an amber filter to facilitate the user to observe and cut blue or blue-green light excited gel

1. When you open the top lid, the blue or blue and green lights on both sides will automatically turn off
1. Push the upper lid to the highest
1. Hang the amber filter as shown on the right
1. After installing the amber filter, you can use the attached rubber cutting tool and press the camera button to start the blue/cyan light for gel cutting.



Project the screen to an external screen or projector

The operation screen of the machine can be projected to an external screen or projector through HDMI.

1. Set the TV or screen or projector to HDMI mode
2. Connect the HDMI cable to the video port of the TV or screen or projector
3. Connect the other end of the HDMI cable to the HDMI port on the back of the Glite T8
4. The operation screen of Glite T8 will be projected to the connected TV or screen or projector.

Product Specification

I. Instrument	
Image component	CMOS
Exposure time range	21 levels
Image storage	USB
Gel shooting area	16 x 10.5cm (Fixed lens)

II. Lens and filter	
Filter Turret	Manual-Driven, 2 position
Emission Filter	518nm Amber Filter

III. Light	
Cyan light (GW)	510 nm LED
Epi white light	White light LED
White light backlight	White light LED backlight

VI. Interface	
Screen	5" Touch TFT LCD
Internal storage	SD Card
Output	1. USB 2.0 x2
	2. HDMI out

V. Other information	
Power	AC Adaptor, 12V/4.6A
Size(WxHxD)	22.9 x 20.7 x 25.4cm (9.02 x 8.14 x 10 inches)
Gel cutting tool	Amber filter
Weight	3.2Kg (7.05 lb)
Safety certification	CE, FCC

Contact Information

For more information or any question, please contact :

**PACIFIC IMAGE ELECTRONICS CO., LTD
7F, No. 239, SEC. 1, DATONG RD., XIZHI DIST.,
NEW TAIPEI CITY 221,
TAIWAN**

**TEL: +886 2 8692 1800
FAX: +886 2 8692 1860
sales@scanace.com.tw
www.scanace.com**

Glite T8

Made in Taiwan

PACIFIC IMAGE ELECTRONICS CO., LTD
7F, No. 239, SEC. 1, DATONG RD., XIZHI DIST., NEW TAIPEI CITY 221, TAIWAN
TEL: +886 2 8692 1800 FAX: +886 2 8692 1860
www.scanace.com